



Finley Hospital Redevelopment

Landscape SD Report



SITE IMAGE
Landscape Architects



Contents

Introduction

The Site

Landscape Principles

Landscape Masterplan

Welcome Area

IPU Wing

Connecting with Country

Existing Trees

Planting Strategy



SITE IMAGE
Landscape Architects



The Site

The proposed hospital redevelopment is on the existing Finley Hospital Site.

The landscape character of the site is a park-land setting, generally of flat grass, mature canopy trees and some small garden beds around the building.

The site is generally flat. Existing circulation on the site is limited to pathway networks connecting carparks to entry points.



SITE IMAGE
Landscape Architects



Landscape Masterplan



Landscape Principles



**Sense of
Welcome**



**Murray and its
tributaries**



**Maintain sense
of open space**

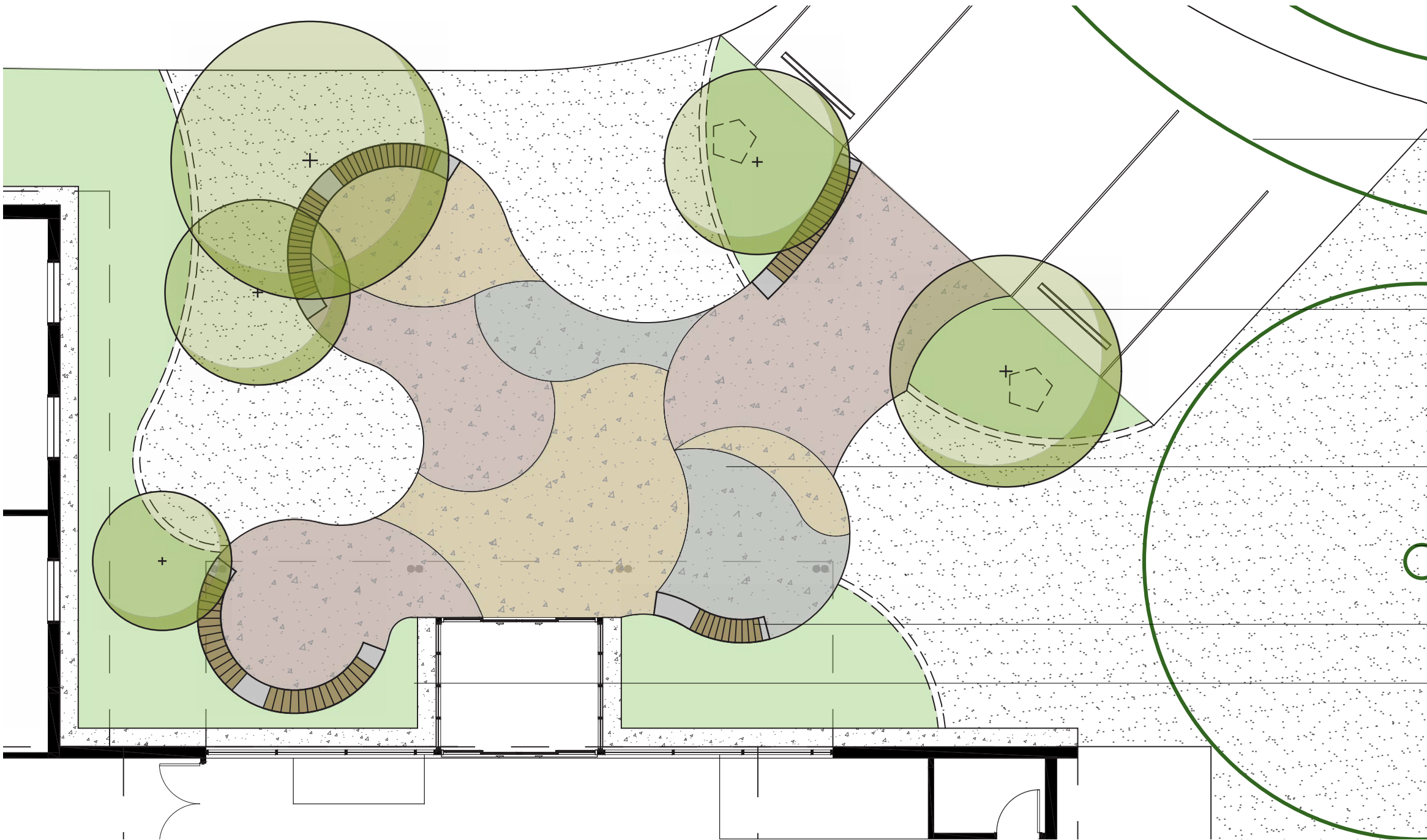


**Indigenous
wildlife attracting
species**

Welcome Area

The welcome area serves as the key community facing landscape area. The forecourt design serves as both access into the building from the carpark an a space for waiting, rest and small gatherings. Planting to the perimeter will screen adjacent rooms and provide a backdrop to the forecourt.

Proposed tree planting will provide shade to the hardstand and seating areas with the architectural canopy providing places for all weather use. Further opportunities for the integration of country design principles.



Existing trees to be retained

Opportunity for sculpture at entry point

Paving inspired by Dhungala and it's forms

Existing trees to be nurtured and protected

Sheltered seating

Screening plants to adjacent treatment rooms

IPU Wing



The IPU viewing courtyard provides a green outlook from internal spaces. With a backdrop of mature canopy trees a generous garden bed. Species within the garden bed will provide year round visual interest with seasonal features.



Connecting with Country

A welcoming space on approach to the hospital with familiarity and themes of country within planting, materiality and forms

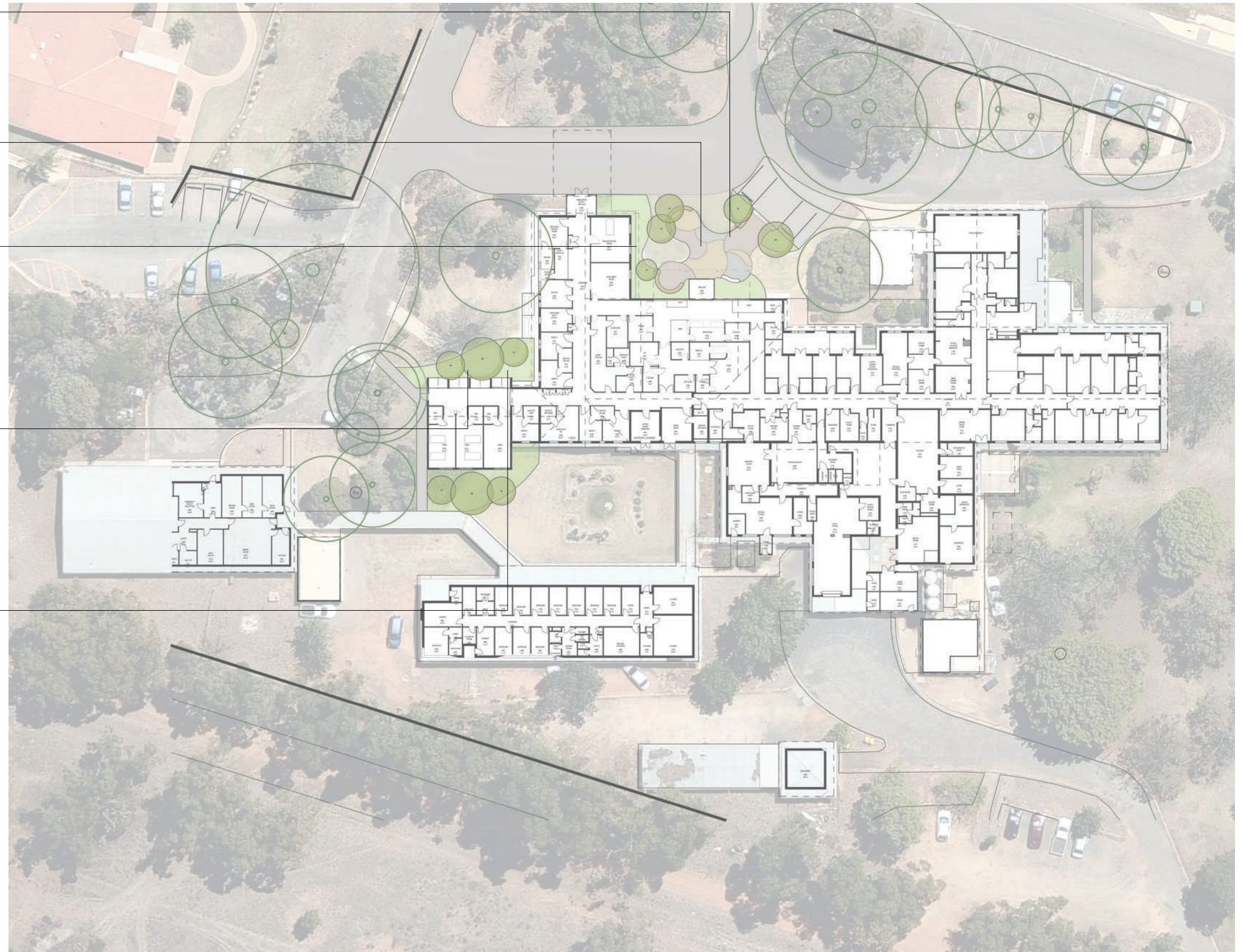
Hardscape design inspired by Dhungala and its tributaries and the Yorta Yorta long neck turtle totem

Medicinal and cultural species - planting used in traditional medicines such as Old Man Weed and the Yam Daisy, grasses used for weaving

Species from locally indigenous planting communities – celebrate the local landscape, provide habitat for species such as the Corroboree Frog and small birds

Landscape designed to be viewed from internal spaces providing a green outlook and connection to the outdoors from clinical spaces.

The landscape design has been informed through the co-design and participation in an initial Walking Country session and a follow up workshop with key community members. Key design principles of Healthy Country, Woven Connections and Welcome, Friend are expressed in the landscape design.



SITE IMAGE
Landscape Architects

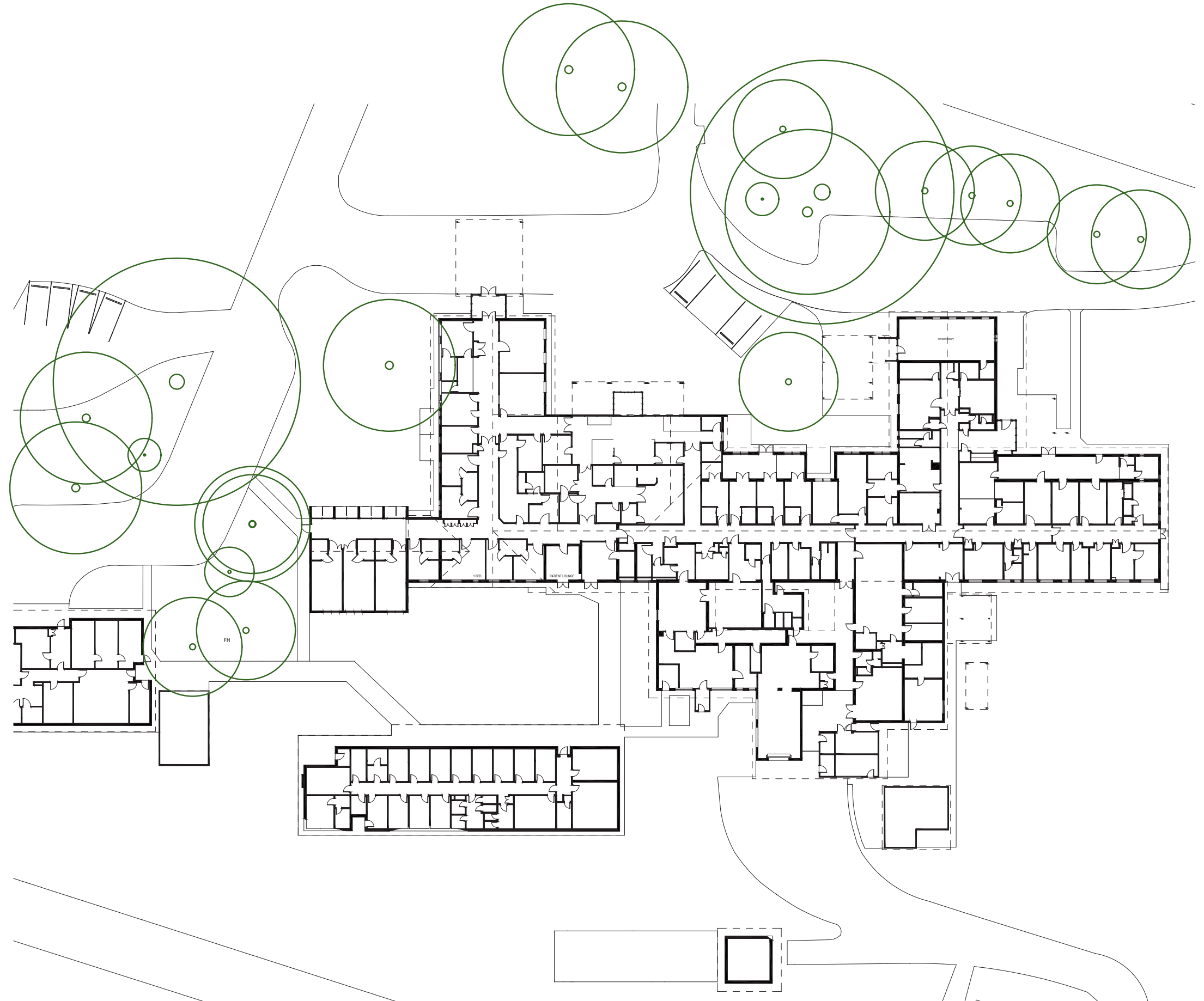


Existing Trees

There are a number of large existing mature trees on site. These are located around the existing building. The current design proposal does not seek to remove any trees.



Existing tree to be retained



Planting Strategy

The planting strategy has been developed from Connecting with Country principles and species within the Connecting with Country Report .
With the key principles being informed though ecological outcomes as well as cultural and clinical outcomes.
Species generally are to be low maintenance non toxic and low allergenic- particularly in areas close to the main building and clinical spaces.



Western Grey Box tall grassy woodland
Eucalyptus microcarpa



Species with fragrance eg Lemon Scented Gum



Seasonality and bird attracting
Local fauna -
White Cockatoo, Corella, Green Grass Parrot,
Magpie, Carroboree Frog



Culturally significant species -
Medicinal, Weaving, Ceremony



Colour and Textural interest

Indicative Plant Schedule

Botanic Name	Common Name	Mature Size (h x w)	Pot Size	Density
TREES				
<i>Acacia pendula</i>	Weeping Myall	4 x 4	200L	Plan
<i>Acer palmatum</i>	Japanese Maple	5 x 3	200L	Plan
<i>Acer freemani 'Jeffersred'</i>	Freeman's Maple	12 x 10	200L	Plan
<i>Allocasuarina luehmannii</i>	Bull Oak	12 x 6	200L	Plan
<i>Brachychiton populneus</i>	Kurrajong	16 x 8	200L	Plan
<i>Corymbia citriodora</i>	Lemon-Scented gum	20 x 10	200L	Plan
<i>Eucalyptus cinerea</i>	Argyle Apple	12 x 6	200L	Plan
<i>Eucalyptus microcarpa</i>	Grey Box	4 x 3	200L	Plan
<i>Eucalyptus melliodora</i>	Yellow Box	25 x 12	200L	Plan
<i>Lagerstroemia indica 'Natchez'</i>	Crepe Myrtle	5 x 3	200L	Plan
<i>Santalum acuminatum</i>	Quandong	4 x 3	200L	Plan
<i>Tristania laurina 'Luscious'</i>	Watergum	10 x 4	200L	Plan
<i>Ulmus parvifolia</i>	Chinese Elm	15 x 6	200L	Plan
SHRUBS & ACCENTS				
<i>Acacia 'Limelight'</i>	Limelight acacia	0.8 x 1.0	300mm	Plan
<i>Coleonema compactum</i>	Diosma Dwarf Pink	0.8 x 0.6	300mm	Plan
<i>Daviesia mimosoides</i>	Leafy Bitter - Pea	1.0 x 0.6	300mm	Plan
<i>Dodonaea viscosa</i>	Broadleaf Hopbush	2 x 1	300mm	Plan
<i>Grevillea floribunda</i>	Rusty Spide Flower	2 x 1	300mm	Plan
<i>Indigofera australis</i>	Australian indigo	2 x 3	300mm	Plan
<i>Leptospermum 'Pink Cascade'</i>	Tea Tree	4 x 2	300mm	Plan
<i>Atriplex nummularia</i>	Oldman saltbush	3 x 2	300mm	Plan
<i>Enchylaena tomentosa</i>	Ruby saltbush	1 x 0.6	300mm	Plan
<i>Westringia 'Blue Gem'</i>	Native Rosemary	0.6 x 0.8	300mm	Plan
GRASSES & GROUND COVERS				
<i>Anigozanthus 'Big Red'</i>	Kangaroo Paw	0.8 x 0.4	150mm	5/m2
<i>Anthropodium strictum</i>	Chocolate Lily	0.5 x 0.3	150mm	5/m2
<i>Austrotipa ramosissima</i>	Stout Bamboo Grass	0.6 x .5	150mm	5/m2
<i>Carpobrotus glaucescens</i>	Pigface	0.3 x 1	150mm	5/m2
<i>Centipeda cunninghamii</i>	Old Man Weed	0.5 x 0.5	150mm	5/m2
<i>Chrysocephalum apiculatum</i>	Yellow Buttons	0.4 x 1	150mm	5/m2
<i>Dianella longifolia</i>	Blueberry Lily	0.5 x 0.5	150mm	5/m2
<i>Goodenia ovata</i>	Hop Goodenia	0.4 x 0.5	150mm	5/m2
<i>Geranium solanderi</i>	Australian Cranesbill	0.3 x 0.8	150mm	5/m2
<i>Liriope 'Evergreen Giant'</i>	Giant Mondo	0.6 x 0.6	150mm	5/m2
<i>Lomandra longifolia</i>	Spiny Head Mat-Rush	0.8 x 0.6	150mm	5/m2
<i>Lomandra 'Tanika'</i>	Dwarf Lomandra	0.5 x 0.6	150mm	5/m2
<i>Microseris walteri</i>	Yam Daisy	0.3 x 0.5	150mm	5/m2
<i>Trachelospermum jasminoides</i>	Star Jasmine	0.5 x 1.0	150mm	5/m3
<i>Prostanthera denticulata</i>	Rough Mint-Bush	0.5 x 0.3	150mm	5/m2
<i>Viola hederacea</i>	Native Violet	0.2 x 0.5	150mm	5/m2



Acacia pendula



Brachychiton populneus



Corymbia citriodora



Dodonaea viscosa 'Purpurea'



Indigofera australis



Westringia 'Blue Gem'



Centipeda cunninghamii



Microseris walteri



Viola hederacea

Materiality

The landscape palette will seek to reinforce Connecting with Country design principles and suggestions within the Connecting with Country Report.

Opportunities to integrate local materiality and colours of Country will be explored. Including the architectural concept .

Proposed furniture will be durable in materials and form and equitable for a variety of users.

